

K~6 Visual Arts: Kindergarten



The Plainview-Old Bethpage elementary art program is designed to reach all students and offer them a broad range of experiences and activities. While supporting the New York State Standards for the Arts, art instruction is based on the Basic Elements of Art and Principles of Design. Children are exposed to creative opportunities in various mediums and areas of self-expression, which are enriched further with art history and the works of accomplished artists. The art program is an integral part of the elementary interdisciplinary curriculum and plays a significant role in community activities as well.

At the conclusion of each year, there is a celebration of the Visual Arts in the form of the Annual Elementary Art Expo, held at the POB Middle School Art Visions Gallery.

Dr. Ben Wiley

Director of Art and Digital Instruction

Students will focus on exploration and experimentation in:

- Line
- Shape
- Color
- Texture
- Patterns
- Balance

Examples may include:

- **Drawing**
 - Linear and figure
- **Painting**
 - Color mixing
 - Warm and cool colors
 - Primary and secondary
- **3-Dimensional work**
 - Surface design, modeling clay, and paper sculpture
- **Art History**

Possible mediums:

- **Paint**
 - Tempera
 - Watercolor
- **Crayon**
 - Blending
 - Outlining
 - Rubbings
 - Crayon resist
- **Clay**
- **Paper**
 - Stencils
 - Cutting
 - Folding
 - Gluing
- Collage

K~12 Art Department

Director Contact

Dr. Ben Wiley, Director of Art and Digital Instruction

106 Washington Ave
Plainview, New York 11803

Phone: (516) 434-3014
Email: BWiley@pobschools.org

K~6 Art Resource Websites

- Plainview-Old Bethpage Art Department: <http://www.pobschools.org/domain/208>
 - Metropolitan Museum: <http://www.metmuseum.org>
- Just for Kids: <http://www.princetonol.com/groups/iad/lessons/middle/for-kids.html>
 - J. Paul Getty Museum: <http://www.getty.edu>
 - Art Institute of Chicago: <http://www.artic.edu>
 - Cleveland Museum of Art: <http://www.clemusart.com>
 - National Gallery of Art: <http://www.nga.gov>
 - Kids Zone: <http://www.nga.gov/kids/zone/zone.htm>
 - Tessellations: <http://tessellations.org/animation-aquarium.htm>
- Optical Illusions: http://www.michaelbach.de/ot/mot_sigma/index.html

K-6 Visual Arts: Grade 1



The Plainview-Old Bethpage elementary art program is designed to reach all students and offer them a broad range of experiences and activities. While supporting the New York State Standards for the Arts, art instruction is based on the Basic Elements of Art and Principles of Design. Children are exposed to creative opportunities in various mediums and areas of self-expression, which are enriched further with art history and the works of accomplished artists. The art program is an integral part of the elementary interdisciplinary curriculum and plays a significant role in community activities as well.

At the conclusion of each year, there is a celebration of the Visual Arts in the form of the Annual Elementary Art Expo, held at the POB Middle School Art Visions Gallery.

Dr. Ben Wiley

Director of Art and Digital Instruction

Students will be introduced to design elements and basic art vocabulary for:

- Line
- Shape
- Color
- Texture
- Space
- Patterns
- Movement/Rhythm
- Balance

Examples may include:

- **Drawing**
 - Family
 - Shape
- **Painting**
 - Abstract
 - Primary Colors
- **3-Dimensional work**
 - Animals
 - Found object
- **Pinch Project (clay)**
 - Subtractive method
- **Art History**
 - Replicating artistic style
 - Reproduction

Possible mediums:

Paint

- ~ Tempera
- **Crayon**
 - Resist technique
- **Pastels**
 - Finger blending
- **Clay**
 - Modeling clay
 - White kiln clay
- **Paper**
 - Construction

K~12 Art Department

Director Contact

Dr. Ben Wiley, Director of Art and Digital Instruction

106 Washington Ave
Plainview, New York 11803

Phone: (516) 434-3014
Email: BWiley@pobschools.org

K~6 Art Resource Websites

- Plainview-Old Bethpage Art Department: <http://www.pobschools.org/domain/208>
 - Metropolitan Museum: <http://www.metmuseum.org>
- Just for Kids: <http://www.princetonol.com/groups/iad/lessons/middle/for-kids.html>
 - J. Paul Getty Museum: <http://www.getty.edu>
 - Art Institute of Chicago: <http://www.artic.edu>
 - Cleveland Museum of Art: <http://www.clemusart.com>
 - National Gallery of Art: <http://www.nga.gov>
 - Kids Zone: <http://www.nga.gov/kids/zone/zone.htm>
 - Tessellations: <http://tessellations.org/animation-aquarium.htm>
- Optical Illusions: http://www.michaelbach.de/ot/mot_sigma/index.html



K~6 Visual Arts: Grade 2



The Plainview-Old Bethpage elementary art program is designed to reach all students and offer them a broad range of experiences and activities. While supporting the New York State Standards for the Arts, art instruction is based on the Basic Elements of Art and Principles of Design. Children are exposed to creative opportunities in various mediums and areas of self-expression, which are enriched further with art history and the works of accomplished artists. The art program is an integral part of the elementary interdisciplinary curriculum and plays a significant role in community activities as well.

At the conclusion of each year, there is a celebration of the Visual Arts in the form of the Annual Elementary Art Expo, held at the POB Middle School Art Visions Gallery.

Dr. Ben Wiley

Director of Art and Digital Instruction

Students will be introduced to realism through self-portraits and communities using:

- Line
- Shape
- Color
- Texture
- Space
- Patterns
- Movement/Rhythm
- Balance

Examples may include:

- **Drawing**
 - Buildings
 - Basic shapes
 - Still lifes
- **Painting**
 - Background/foreground
- **Printing**
 - Stamping
- **3-Dimensional work**
 - Diorama communities
 - Coil project (clay)
 - Building techniques
- **Art History**
 - Artists and their stories
 - In-school residency with the Heckscher Museum
 - Prepares students for 3rd Grade visit to a museum exhibit
 - Ties curriculum to a particular work of art

Possible mediums:

- **Paint**
 - Tempera as mixed media
 - Watercolor background
- **Crayon**
 - Scratch designs
- **Pastels**
 - Blending
- **Clay**
 - White kiln clay
- **Paper**
 - Cutting skills/technique
- **Chalk**
 - Painting with water
 - Textured paper

K~12 Art Department

Director Contact

Dr. Ben Wiley, Director of Art and Digital Instruction

106 Washington Ave
Plainview, New York 11803

Phone: (516) 434-3014
Email: BWiley@pobschools.org

K-6 Art Resource Websites

- Plainview-Old Bethpage Art Department: <http://www.pobschools.org/domain/208>
 - Metropolitan Museum: <http://www.metmuseum.org>
- Just for Kids: <http://www.princetonol.com/groups/iad/lessons/middle/for-kids.html>
 - J. Paul Getty Museum: <http://www.getty.edu>
 - Art Institute of Chicago: <http://www.artic.edu>
 - Cleveland Museum of Art: <http://www.clemusart.com>
 - National Gallery of Art: <http://www.nga.gov>
 - Kids Zone: <http://www.nga.gov/kids/zone/zone.htm>
 - Tessellations: <http://tessellations.org/animation-aquarium.htm>
- Optical Illusions: http://www.michaelbach.de/ot/mot_sigma/index.html



K~6 Visual Arts: Grade 3



The Plainview-Old Bethpage elementary art program is designed to reach all students and offer them a broad range of experiences and activities. While supporting the New York State Standards for the Arts, art instruction is based on the Basic Elements of Art and Principles of Design. Children are exposed to creative opportunities in various mediums and areas of self-expression, which are enriched further with art history and the works of accomplished artists. The art program is an integral part of the elementary interdisciplinary curriculum and plays a significant role in community activities as well.

At the conclusion of each year, there is a celebration of the Visual Arts in the form of the Annual Elementary Art Expo, held at the POB Middle School Art Visions Gallery.

Dr. Ben Wiley

Director of Art and Digital Instruction

Students will be introduced to various cultures and the art they contribute using:

- Line
- Shape
- Color
- Texture
- Space
- Patterns
- Movement/
Rhythm
- Balance

Examples may include:

- **Drawing**
 - Machines
 - Expressions
- **Painting**
 - Landscape
- **Printing**
 - Repetition
- **3-Dimensional work**
 - Wood sculpture
- **Slab relief (clay)**
 - Additive method
- **Art History**
 - Art specific to a culture
 - Visit to Heckscher Museum connects artistic style to hands-on classroom projects
- **Pastels**
 - Wet paper
- **Clay**
 - White kiln clay
- **Paper**
 - Positive/negative
 - Introduction to origami

Possible mediums:

- **Paint**
 - Tempera - compositions
 - Watercolor - wet paper
- **Crayon**
 - Batik

K~12 Art Department

Director Contact

Dr. Ben Wiley, Director of Art and Digital Instruction

106 Washington Ave
Plainview, New York 11803

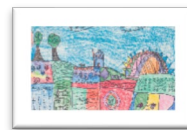
Phone: (516) 434-3014
Email: BWiley@pobschools.org

K-6 Art Resource Websites

- Plainview-Old Bethpage Art Department: <http://www.pobschools.org/domain/208>
 - Metropolitan Museum: <http://www.metmuseum.org>
- Just for Kids: <http://www.princetonol.com/groups/iad/lessons/middle/for-kids.html>
 - J. Paul Getty Museum: <http://www.getty.edu>
 - Art Institute of Chicago: <http://www.artic.edu>
 - Cleveland Museum of Art: <http://www.clemusart.com>
 - National Gallery of Art: <http://www.nga.gov>
 - Kids Zone: <http://www.nga.gov/kids/zone/zone.htm>
 - Tessellations: <http://tessellations.org/animation-aquarium.htm>
- Optical Illusions: http://www.michaelbach.de/ot/mot_sigma/index.html



K~6 Visual Arts: Grade 4



The Plainview-Old Bethpage elementary art program is designed to reach all students and offer them a broad range of experiences and activities. While supporting the New York State Standards for the Arts, art instruction is based on the Basic Elements of Art and Principles of Design. Children are exposed to creative opportunities in various mediums and areas of self-expression, which are enriched further with art history and the works of accomplished artists. The art program is an integral part of the elementary interdisciplinary curriculum and plays a significant role in community activities as well.

At the conclusion of each year, there is a celebration of the Visual Arts in the form of the Annual Elementary Art Expo, held at the POB Middle School Art Visions Gallery.

Dr. Ben Wiley

Director of Art and Digital Instruction

Students will receive instruction that emphasizes drawing skills, details, still lifes, and Native American Art using:

- Line
- Shape
- Color
- Texture
- Space
- Patterns
- Movement/Rhythm
- Balance
- Contrast

Examples may include:

- **Drawing**
 - Gesture
 - Self-portrait
- **Painting**
 - Cityscape
- **Printing**
 - Overlapping
- **3-Dimensional work**
 - Totems
- **Pinch, coil or clay slab project**
 - Additive method
 - Subtractive method
 - Building technique
- **Art History**
 - Surrealism
 - Native American Art

Possible mediums:

- **Paint**
 - Tempera - on mixed media such as cardboard, fabric, plastic
 - Watercolor - dry paper
- **Pastels**
 - Oil-based
- **Clay**
 - White or red kiln clay
- **Paper**
 - Folding techniques
 - Advanced origami

K~12 Art Department

Director Contact

Dr. Ben Wiley, Director of Art and Digital Instruction

106 Washington Ave
Plainview, New York 11803

Phone: (516) 434-3014
Email: BWiley@pobschools.org

K~6 Art Resource Websites

- Plainview-Old Bethpage Art Department: <http://www.pobschools.org/domain/208>
 - Metropolitan Museum: <http://www.metmuseum.org>
- Just for Kids: <http://www.princetonol.com/groups/iad/lessons/middle/for-kids.html>
 - J. Paul Getty Museum: <http://www.getty.edu>
 - Art Institute of Chicago: <http://www.artic.edu>
 - Cleveland Museum of Art: <http://www.clemusart.com>
 - National Gallery of Art: <http://www.nga.gov>
 - Kids Zone: <http://www.nga.gov/kids/zone/zone.htm>
 - Tessellations: <http://tessellations.org/animation-aquarium.htm>
- Optical Illusions: http://www.michaelbach.de/ot/mot_sigma/index.html



K~6 Visual Arts: Grade 5

The Plainview-Old Bethpage elementary art program is designed to reach all students and offer them a broad range of experiences and activities. While supporting the New York State Standards for the Arts, art instruction is based on the Basic Elements of Art and Principles of Design. Children are exposed to creative opportunities in various mediums and areas of self-expression, which are enriched further with art history and the works of accomplished artists. The art program is an integral part of the elementary interdisciplinary curriculum and plays a significant role in community activities as well.

Dr. Ben Wiley

Director of Art and Digital Instruction

The middle school art program builds on the strengths of the foundation established by the elementary art concepts and practices and bridges to the high expectations of the competitive high school art program. The following outline presents a general overview of each grade level experience and identifies some of the mediums and areas of emphasis. Projects, interpretations and outcomes vary from year to year and from class to class.

At each middle school, student's artwork is often displayed throughout the classroom, school hallways, and Art gallery spaces.

Students will be introduced to design elements and basic art vocabulary for:

- Line
- Shape
- Color
- Texture
- Space
- Patterns
- Movement/Rhythm
- Balance
- Contrast

Examples may include:

- **Drawing**
 - Gesture
 - Self-portrait
- **Painting**
 - Color and Design
 - Cityscape
- **Printing**
 - Overlapping
- **3-Dimensional work**
 - 3D Printed Design
 - Puppetry
 - O'Keefe style reliefs
- **Art History**
 - Surrealism
 - Famous sculptors

Possible mediums:

- **Paint**
 - Tempera - on mixed media such as cardboard, fabric, plastic
 - Watercolor - dry paper
- **Pastels**
 - Oil-based
- **Clay**
 - Slab method
- **Paper**

K~12 Art Department

Director Contact

Dr. Ben Wiley, Director of Art and Digital Instruction

106 Washington Ave
Plainview, New York 11803

Phone: (516) 434-3014
Email: BWiley@pobschools.org

K~6 Art Resource Websites

- Plainview-Old Bethpage Art Department: <http://www.pobschools.org/domain/208>
 - Metropolitan Museum: <http://www.metmuseum.org>
- Just for Kids: <http://www.princetonol.com/groups/iad/lessons/middle/for-kids.html>
 - J. Paul Getty Museum: <http://www.getty.edu>
 - Art Institute of Chicago: <http://www.artic.edu>
 - Cleveland Museum of Art: <http://www.clemusart.com>
 - National Gallery of Art: <http://www.nga.gov>
 - Kids Zone: <http://www.nga.gov/kids/zone/zone.htm>
 - Tessellations: <http://tessellations.org/animation-aquarium.htm>
- Optical Illusions: http://www.michaelbach.de/ot/mot_sigma/index.html



K~6 Visual Arts: Grade 6

The Plainview-Old Bethpage elementary art program is designed to reach all students and offer them a broad range of experiences and activities. While supporting the New York State Standards for the Arts, art instruction is based on the Basic Elements of Art and Principles of Design. Children are exposed to creative opportunities in various mediums and areas of self-expression, which are enriched further with art history and the works of accomplished artists. The art program is an integral part of the elementary interdisciplinary curriculum and plays a significant role in community activities as well.

Dr. Ben Wiley

Director of Art and Digital Instruction

The middle school art program builds on the strengths of the foundation established by the elementary art concepts and practices and bridges to the high expectations of the competitive high school art program. The following outline presents a general overview of each grade level experience and identifies some of the mediums and areas of emphasis. Projects, interpretations and outcomes vary from year to year and from class to class.

At each middle school, student's artwork is often displayed throughout the classroom, school hallways, and Art gallery spaces.

Students will be introduced to design elements and basic art vocabulary for:

- | | | |
|-----------|-------------------|------------|
| • Line | • Space | • Contrast |
| • Shape | • Patterns | • Emphasis |
| • Color | • Movement/Rhythm | |
| • Texture | • Balance | |

Examples may include:

- **Drawing**
 - Observational
 - Figure movement & Portrait
- **Painting**
 - Secondary color mixing
- **3-Dimensional work**
 - 3D Printed Design
 - Puppets and literature
 - Bottle people
- **Art History**
 - Multicultural influences
 - Integration with social studies, science, and English

Possible mediums:

- **Paint**
 - Tempera
 - Brush techniques – stippling, wet, dry
- **Watercolor**
 - Horizon line
 - Foreground/Background
- **Pastels**
 - Blending
 - Overlapping objects
- **Clay**
 - Slab method with texture and additions
- **Paper**

K-12 Art Department

Director Contact

Dr. Ben Wiley, Director of Art and Digital Instruction

106 Washington Ave
Plainview, New York 11803

Phone: (516) 434-3014
Email: BWiley@pobschools.org

K-6 Art Resource Websites

- Plainview-Old Bethpage Art Department: <http://www.pobschools.org/domain/208>
 - Metropolitan Museum: <http://www.metmuseum.org>
- Just for Kids: <http://www.princetonol.com/groups/iad/lessons/middle/for-kids.html>
 - J. Paul Getty Museum: <http://www.getty.edu>
 - Art Institute of Chicago: <http://www.artic.edu>
 - Cleveland Museum of Art: <http://www.clemusart.com>
 - National Gallery of Art: <http://www.nga.gov>
 - Kids Zone: <http://www.nga.gov/kids/zone/zone.htm>
 - Tessellations: <http://tessellations.org/animation-aquarium.htm>
- Optical Illusions: http://www.michaelbach.de/ot/mot_sigma/index.html

